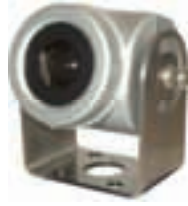


## Compact camera (colour)



With its die-cast housing, the robust MorE-C2 compact camera is ideally protected against adverse weather conditions. Due to its high shock and vibration resistance, it can be used under the most difficult conditions. Equipped with an automatic brightness adjustment, the MorE-C2 provides sharp, high-contrast images even under changing exposure to light.

### Model

MorE-C2

Technical Data	
Housing protection class	IP69K
Shock resistance	> 50 g
Vibration resistance	> 10 g
Housing	Aluminum, anodized
Horizontal image angle	70° / 90°
Min. light intensity	< 0,3 lx
Resolution	320.000 Pixel
Image sensor	1/3" CCD-Sensor
Video-signal	FBAS, 1 Vss / 75 Ohm
Voltage supply	12 V DC (max. 11 V ... 16 V DC)
Current consumption	max. 0,25 A
Operation temperature	-35 °C ... +75 °C
Storage temperature	-40 °C ... +80 °C
Resistance to salt	according to IEC 60068-2-11
Window heater	automatic controlled
Brightness adjustment	automatic

### Dimensions

